

GLIDES - TILT CIRCLIP STEM

SPECIFICATION

GLIDE TYPE

Tilt Circlip Stem

MATERIALS

Stem Steel BZP

Base See Below

STANDARD COLOURS

Black

TECHNISCHE DATEN

GLEITER TYP

Gelenk Teller mit Federring

MATERIAL

Stift Stahl Verzinkt

Teller Siehe Unten

STANDARDFARBEN

Schwarz

SPECIFICATION

TYPE DE PATIN

Tige à clips (orientable)

MATIERES

Tige Acier, plaqué de zinc

Base Voir ci-dessous

COLORIS STANDARD

Noir

ESPECIFICACION

TIPO DE PATA

Vástago orientable con anillo de sujeción

MATERIALES

Vástago Acero, chapado de zinc

Base Ver abajo

COLORES ESTANDAR

Negro



NO.

6408-25-1

6403-25-1

Ø10 x 22

Ø11 x 22

25

25

50

50

PE

PE



NO.

6408-32-1

6403-32-1

Ø10 x 22

Ø11 x 22

32

32

75

75

PE

PE



NO.

6408-40-1

6403-40-1

Ø10 x 22

Ø11 x 22

40

40

75

75

PE

PE



NO.

6408-47-1

6403-47-1

Ø10 x 22

Ø11 x 22

47

47

200

200

PP

PP



NO.

6408-55-1

6403-55-1

Ø10 x 22

Ø11 x 22

55

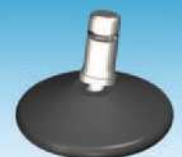
55

200

200

PP

PP



GR50 GLIDES

SPECIFICATION MATERIALS

Stem Steel BZP
Base PA

STANDARD COLOURS

Black

TECHNISCHE DATEN MATERIAL

Stift Stahl Verzinkt
Teller PA

STANDARDFARBEN

Schwarz

SPECIFICATION MATIERES

Tige Acier, plaqué de zinc
Base PA

COLORIS STANDARD

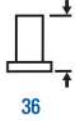
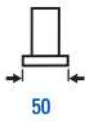
Noir

ESPECIFICACION MATERIALES

Vástago Acero, chapado de zinc
Base Nilón

COLORES ESTANDAR

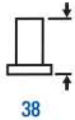
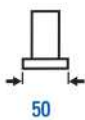
Negro



GR 50 GLIDE 1436

NO.

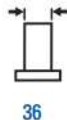
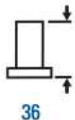
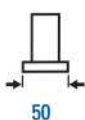
9900-1436-1	-----	36	---	50
9903-1436-1	Ø11 x 22	39.5	22	50
9908-1436-1	Ø10 x 22	39.5	22	50
9920-1436-1	M8 x 15	42.5	15	50
9902-1436-1	M10 x 15	42.5	15	50



GR 50 GLIDE 2836

NO.

9400-2836-1	-----	36	---	50
9403-2836-1	Ø11 x 22	39.5	22	50
9408-2836-1	Ø10 x 22	39.5	22	50
9420-2836-1	M8 x 15	42.5	15	50
9402-2836-1	M10 x 15	42.5	15	50



GR 50 GLIDE 3636

NO.

9400-3636-1	-----	36	---	50
9403-3636-1	Ø11 x 22	39.5	22	50
9408-3636-1	Ø10 x 22	39.5	22	50
9420-3636-1	M8 x 15	42.5	15	50
9402-3636-1	M10 x 15	42.5	15	50



GR50 GLIDES

SPECIFICATION MATERIALS

Stem Steel BZP
Base PA

STANDARD COLOURS

Black

TECHNISCHE DATEN MATERIAL

Stift Stahl Verzinkt
Teller PA

STANDARDFARBEN

Schwarz

SPECIFICATION MATIERES

Tige Acier, plaqué de zinc
Base PA

COLORIS STANDARD

Noir

ESPECIFICACION MATERIALES

Vástago Acero, chapado de zinc
Base Nilón

COLORES ESTANDAR

Negro



50



56



36



GR 50 GLIDE 3656

NO.

9400-3656-1	-----	56	----	50
9403-3656-1	Ø11 x 22	59.5	22	50
9408-3656-1	Ø10 x 22	59.5	22	50
9420-3656-1	M8 x 15	62.5	15	50
9402-3656-1	M10 x 15	62.5	15	50



50



36



41.5



GR 50 GLIDE 41536

NO.

9400-41536-1	-----	36	----	50
9403-41536-1	Ø11 x 22	39.5	22	50
9408-41536-1	Ø10 x 22	39.5	22	50
9420-41536-1	M8 x 15	42.5	15	50
9402-41536-1	M10 x 15	42.5	15	50



50



56



41.5



GR 50 GLIDE 41556

NO.

9400-41556-1	-----	56	----	50
9403-41556-1	Ø11 x 22	59.5	22	50
9408-41556-1	Ø10 x 22	59.5	22	50
9420-41556-1	M8 x 15	62.5	15	50
9402-41556-1	M10 x 15	62.5	15	50



GR50 AND GR60 GLIDES

SPECIFICATION MATERIALS

Stem Steel BZP
Base PA
STANDARD COLOURS
Black

TECHNISCHE DATEN MATERIAL

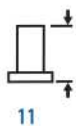
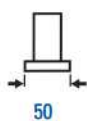
Stift Stahl Verzinkt
Teller PA
STANDARDFARBEN
Schwarz

SPECIFICATION MATIERES

Tige Acier, plaqué de zinc
Base PA
COLORIS STANDARD
Noir

ESPECIFICACION MATERIALES

Vástago Acero, chapado de zinc
Base Nilón
COLORES ESTANDAR
Negro



GR 50 GLIDE 0011

NO.

6510-1
6514-1

Ø11 x 22
Ø9 x 28.5

14.5
11

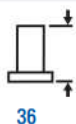
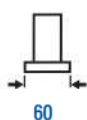
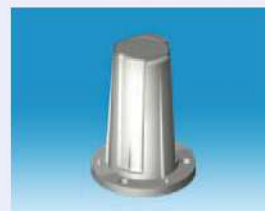
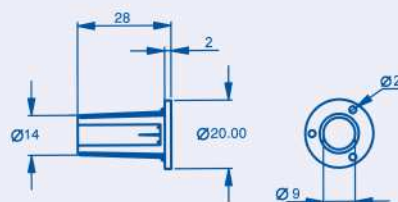
22
28.5

50
50



9245

Metal Bush For 9mm Stem



GR 60 GLIDE 5036

NO.

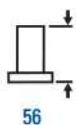
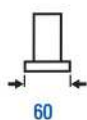
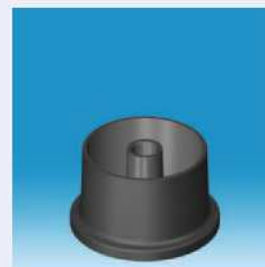
9800-5036-1
9803-5036-1
9808-5036-1
9820-5036-1
9802-5036-1

Ø11 x 22
Ø10 x 22
M8 x 15
M10 x 15

36
39.5
39.5
42.5
42.5

22
22
15
15

50
50
50
50
50



GR 60 GLIDE 5056

NO.

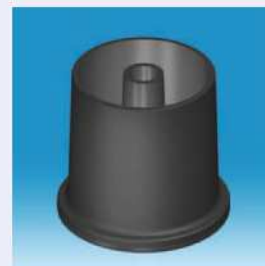
9800-5056-1
9803-5056-1
9808-5056-1
9820-5056-1
9802-5056-1

Ø11 x 22
Ø10 x 22
M8 x 15
M10 x 15

56
59.5
59.5
62.5
62.5

22
22
15
15

50
50
50
50
50



SN GLIDE

SPECIFICATION MATERIALS

Stem Steel BZP
Base PA

STANDARD COLOURS

Black

TECHNISCHE DATEN MATERIAL

Stift Stahl Verzinkt
Teller PA

STANDARDFARBEN

Schwarz

SPECIFICATION MATIERES

Tige Acier, plaqué de zinc
Base PA

COLORIS STANDARD

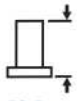
Noir

ESPECIFICACION MATERIALES

Vástago Acero, chapado de zinc
Base Nilón

COLORES ESTANDAR

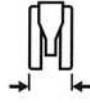
Negro



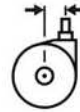
53.5



16



25



7.5



35



SN GLIDE

NO.

7100-1
7103-1
7108-1
7120-1
7102-1

Ø11 x 22
Ø10 x 22
M8 x 15
M10 x 15

53.5
57
57
60
60

22
22
15
15

50
50
50
50
50

