

THREADED TUBE INSERTS

SPECIFICATION

MATERIALS

See Below

STANDARD COLOURS

Black

TECHNISCHE DATEN

MATERIAL

Siehe Unten

STANDARDFARBEN

Schwarz

SPECIFICATION

MATIERES

Voir ci-dessous

COLORIS STANDARD

Noir

ESPECIFICACION

MATERIALES

Ver abajo

COLORES ESTANDAR

Negro

PLASTIC ROUND

NO.	Ins x Gauge	mm	Thread	a
5710-1B0	3/4 x 18	19 x 1.25	M8	5
5739-1B0	-----	20 x 1/2.0	M10	-
5714-1B0	1 x 20	25.4 x 0.9	M8	5
5740-1B0	-----	25 x 1/2.0	M8	-
5750-1B0	-----	50 x 1/2.0	M10	-
5761-1	1 1/2 x 14	-----	M12	6.5
5765-1	1 3/4 x 14	-----	M10	6



(kg)

---	PP
---	PA
---	PP
---	PA/Steel
---	PP
500	PA
350	PA



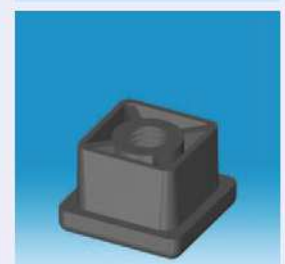
PLASTIC SQUARE

NO.	Ins x Ins x Gauge	mm	Thread	a
5802-1	3/4 x 3/4 x 18	-----	M8	4
5806-1	3/4 x 3/4 x 16	-----	M8	4
5816-1	-----	20 x 20 x 1.5	M10	4
4842-1	1 x 1 x 16/18	25 x 25 x 1.25/1.5	M8	4
5822-1	1 x 1 x 18	-----	M8	7
5830-1	1 x 1 x 16	-----	M8	6.5
5831-1	-----	25 x 25 x 1.5	M10	6.5
5807-1B0	-----	25 x 25 x 1.5	M10	-
5833-1	1 1/8 x 11/8 x 18	-----	M8	3.5
5811-1B0	-----	30 x 30 x 1.5	M8	5
5840-1	-----	30 x 30 x 1.5	M10	6
5808-1B0	-----	30 x 30 x 1.5	M10	-
5844-1	-----	30 x 30 x 2	M10	6
5880-1	Long Shank	30 x 30 x 2	M10	6
5846-1	-----	30 x 30 x 2.5	M10	6
5853-1	1 1/4 x 1 1/4 x 18	-----	M8	7
5855-1	1 1/4 x 1 1/4 x 18	-----	M10	7
5854-1	1 1/4 x 1 1/4 x 16	-----	M8	7
5856-1	1 1/4 x 1 1/4 x 16	-----	M10	7
5857-1	1 1/4 x 1 1/4 x 14	-----	M12	7
5865-1	1 1/2 x 1 1/2 x 18	-----	M10	7
5866-1	1 1/2 x 1 1/2 x 16	-----	M10	7
5871-1	1 1/2 x 1 1/2 x 12	-----	M10	8
5870-1	1 1/2 x 1 1/2 x 12	-----	M12	8
5809-1B0	-----	40 x 40 x 1.5	M10	-
5810-1B0	-----	50 x 50 x 1.5	M10	-



(kg)

150	H.I.P.
150	H.I.P.
150	H.I.P.
150	PP
150	H.I.P.
200	H.I.P.
200	H.I.P.
-	PE.
150	H.I.P.
-	PP
200	H.I.P.
-	PE.
200	H.I.P.
200	H.I.P.
200	H.I.P.
250	H.I.P.
250	H.I.P.
250	H.I.P.
250	H.I.P.
250	H.I.P.
250	H.I.P.
250	H.I.P.
250	H.I.P.
250	H.I.P.
300	H.I.P.
-	PE.
-	PE.



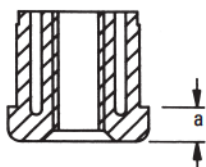
PLASTIC RECTANGULAR

NO.	Ins x Ins x Gauge	mm	Thread	a
5861-1B0	1 1/2 x 3/4 x 17/18	-----	M8	-
5860-1	1 1/2 x 3/4 x 16	-----	M10	4
5884-1B0	-----	40 x 20 x 1.5	M8	5
5883-1B0	-----	50 x 25 x 1.5	M10	4
5887-1NYLONB0	-----	60 x 30 x 2	M10	4



(kg)

-	PP
200	H.I.P.
-	PP
-	PE.
-	PA.



THREADED TUBE INSERTS

SPECIFICATION MATERIALS

Steel BZP

TECHNISCHE DATEN MATERIAL

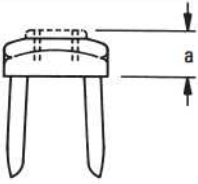
Stahl Verzinkt

SPECIFICATION MATIERES

Acier, plaqué de zinc

ESPECIFICACION MATERIALES

Acero, chapado de zinc



METAL ROUND

NO.	Ins x Gauge	mm	Thread	a	Load (kg)
3026-BZP-ABM10	1 x 18	25 x 1 25 x 1.25 25.4 x 1.25	M10	10	350
3028-BZP-ABM10	1 x 16	25 x 1.5 25.4 x 1.5	M10	10.5	500
3034-BZP-ABM10	1 1/8 x 16	28.6 x 1.5	M10	10.5	350
3036-BZP-ABM10	1 1/4 x 18	32 x 1.5	M10	12.75	350
3038-BZP-ABM10	1 1/4 x 16	32 x 2	M10	13	350
3044-BZP-ABM10	1 1/2 x 18	38 x 1.5	M10	13.5	350
3046-BZP-ABM10	1 1/2 x 16	38 x 1.75	M10	13.25	350

METAL SQUARE

NO.	Ins x Gauge	mm	Thread	a	Load (kg)
3072-BZP-T	1 x 1 x 18	25 x 25 x 1 25.4 x 25.4 x 1.25	M8	8.5	200
3074-BZP-T	1 x 1 x 16	25 x 25 x 1.5 25.4 x 25.4 x 1.5	M8	10	300
3072-BZP- ABM10	1 x 1 x 18	25 x 25 x 1 25.4 x 25.4 x 1.25	M10	11	350
3074-BZP- ABM10	1 x 1 x 16	25 x 25 x 1.5 25.4 x 25.4 x 1.5	M10	12.5	500

